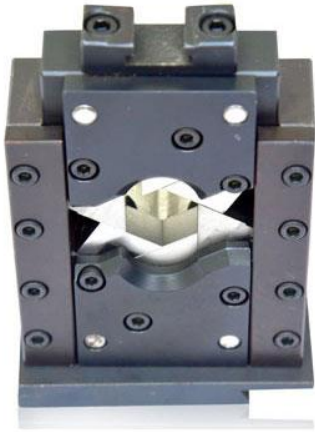


CRIMPING APPLICATOR – (HEX CRIMPING TOOL)

Sai Paradise Machine Tools



Overview

This machine is designed for crimping the tube terminal with Hex crimping. No need to change the applicator and with high accuracy. It can adjust the position with the actual square wire. It works with PLC control system. It doesn't need to change crimping applicator when crimping the closed tube-shaped terminal from size 10-12 sqmm.

Features

1. Industrial level control chip and high precise servo driving to ensure its high speed and stable running
2. With PLC control system, it can instantly change the crimping range of different terminals, and the operation is by touch screen (HMI)
3. It doesn't required crimping applicator when crimping is closed tube shaped terminal from size 10-120 sqmm
4. It can adjust the position with the actual square wire
5. Compact structure, space saving and low working noise

Applications

It is used in Wire harness industries, Automobile industries, Home appliance industries, Control panel manufacturing industries.

Technical Details

Wire range	10-120 mm ² (Min: Awg 10#, 240 mm ² can be special ordered)
Crimping force	200KN
Stroke	350 mm
Crimping width	12.5 mm (other size can be special ordered)
Weight	120KG
Dimension	500 x 450 x 480 mm
Power	220V 50HZ
Motor	2300w